



SěAH

SeAH Engineering

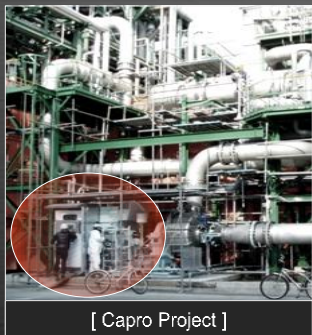
BUSINESS OVERVIEW

설립	1987
위치	Daejeon(HQ), Pohang
종업원	95 명
생산품	Turbo Compressors, blowers, Gen-sets & Facilities Engineering

Building Site (Unit:m ²)		16,624
Factory	Centrifugal Blower	7,438
	R&D Center	562
	Office 1 st & 2 nd	794
Office	R&D 1 st & 2 nd	396
		1,190

- Offers gearbox **turbo compressors**, air bearing **turbo blowers** and **Gen-sets**
- Conducts **Plant EPC**(Engineering, Procurement, Construction) projects

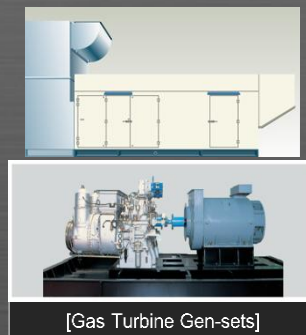
Turbo compressors & Blowers, Gen-sets



[Capro Project]



[Turbo Blower System Component]



[Gas Turbine Gen-sets]

Facilities engineering



[SeAH Besteel 150T Electric Furnace]

History & Growth

SēAH



1980

1987 부산파이프(현'세아제강) 기계사업부에서 계열사 분리 “해덕기계” 설립

1990

1994 터보압축기 국내 최초 개발 (국산화)

2000

2001 울진5,6호기 원자력발전소 터보압축기 납품 (2009 신월성1,2호기 원자력발전소 납품)
상암지역난방 **LFG** 터보가스압축기 납품

2002 세계일류상품 인증획득

2004 수도권매립지자원화시설 **LFG** 터보가스압축기 납품

2009 MVR steam compressor 납품 (국내최초 국산화)

2010

2012 (주) 엔틀 (Turbo Blower business) 인수

2013 “세아엔지니어링” - 상호 변경

Pioneer

Challenge

Creation

Innovation

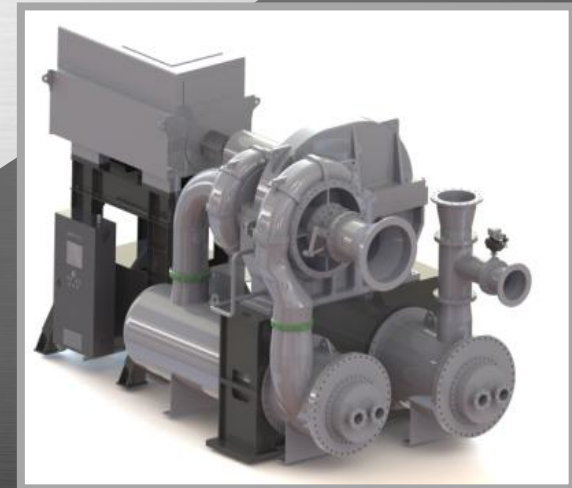


Product & Technology Compressor



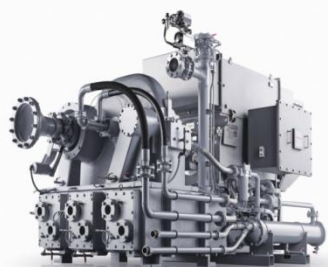
PRODUCTS SPECIFICATION

- **Gases: Air, Fuel Gas, CO₂, N₂, LNG, Steam etc**
- **Single and Multi-stage(1-6 stages) gear type centrifugal compressors**
- **Compression up to 25 kg/cm².g**
- **Drive Power up to 4,500Kw**
- **Flow up to 51,000m³/hr**
- **Wide operating range due to variable I.G.V and D.G.V**
- **Apply API 617 / API 672 / API614**

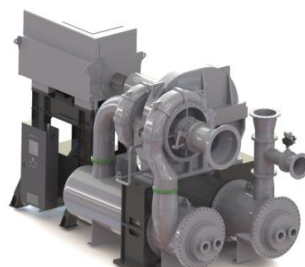


Solution for all Applications

NWB & ST Model 고객의 요구에 맞추는 광범위한 LINE-UP 구성 (표준형&주문형)



Air Compressor



**Process Air Compressor
-API672 Air Compressor**



CO2 Compressor



N2 Gas Compressor



**Mechanical Vapor Recompression
- Steam Compressor**

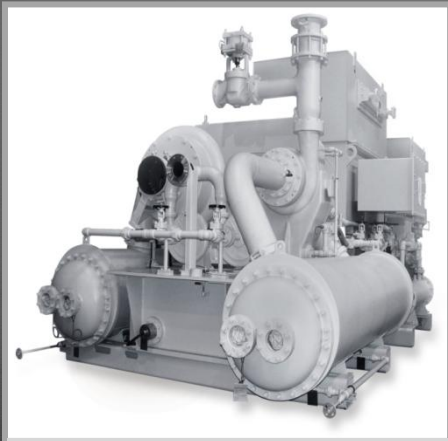


Fuel Gas Compressor

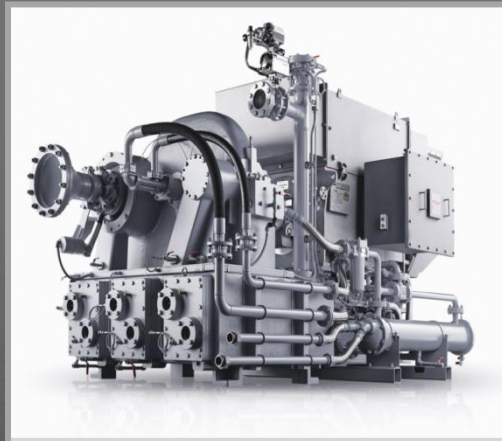
Centrifugal Compressor

Air Compressor : NWB/WB & ST SERIES

- Flow : 2,500~51,000 m³/hr
- Pressure : 0.8~25 Bar.G
- Power : 260~4,500 kw



[ST-Model]



[(N)WB-Model]



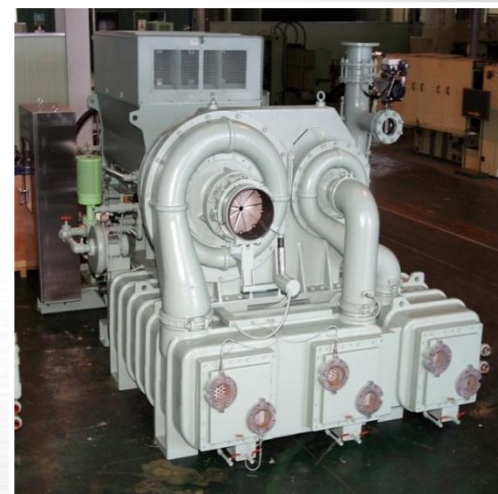
[Sound Proof Enclosure]

Centrifugal Compressor

Process Air Compressor



5000HP Air Compressor



Integrate casting Model(3000HP)



High Pressure & Gas Compressor

Centrifugal Gas Compressor

Fuel Gas Compressor(FGC) – 연료가스압축기는 발전산업 영역에서 고객의 생산성 극대화

■ Model: STG3000L1 * 3 units, Capacity : 31,400 m³ / hr



■ Model: STG1200L2 * 2 units, Capacity : 12,100 m³ / hr



Centrifugal Gas Compressor

CO2 Gas COMPRESSOR

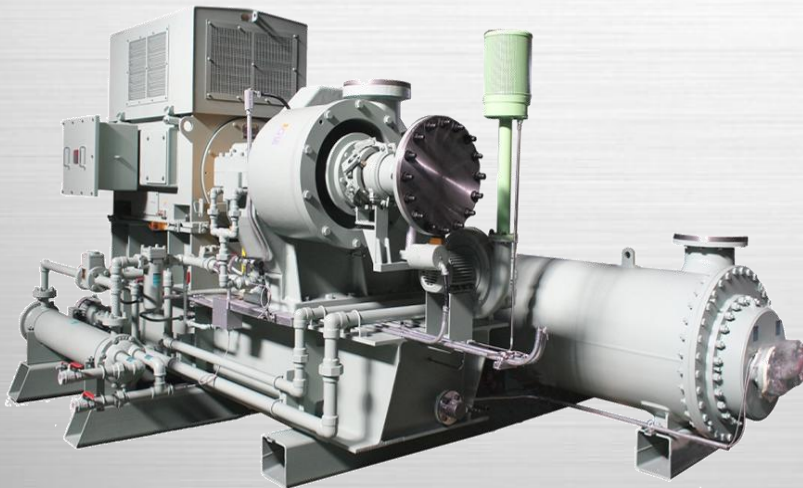
CO2 compressor는 공급된 CO2 가스를 압축하여 사용처의 이송라인에 공급하는 장비임.



Centrifugal Gas Compressor

Nitrogen(N₂) COMPRESSOR

- N₂ gas boosting 및
N₂ gas 이송용으로 사용되는 장비임



Inspired
by
SěAH